

# Precision In Every Measurement



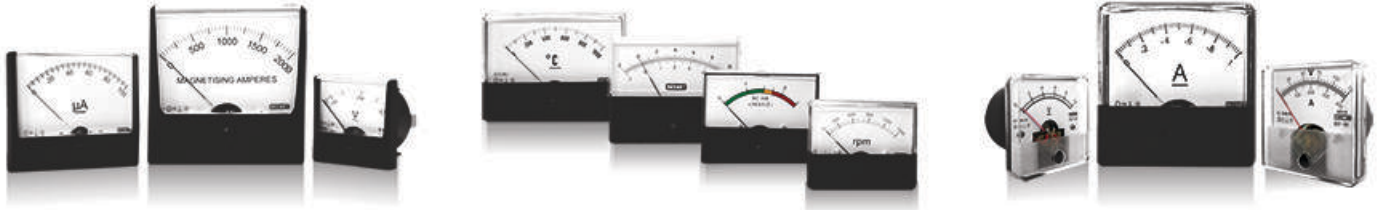


## SURFACE MOUNT METERS

DCF-83, DCF-120, DCF-65

DCF-106, DCF-90, DCF-80(R), DCF 69

DCF-50, DCF-80, DCF-60



Features modern design with optically clear cover, providing an exceptionally high viewing angle for easy reading. A range of 10 surface mount models utilizing pivot & jewel mechanism. The range offers moving iron & moving coil AC & DC Ammeters & Voltmeters designed to perform in demanding environment applications.



## DIN METERS

SIF-48, SIF-72, SIF-96, SIF-144



A range of most popular meters for panel manufacturers in 4 sizes. Shock resistant with spring, pivot, jewel mechanisms. A selection of slide in dials & customized options are available.



## WATT & POWER FACTOR

W & P SERIES



Available in DIN sizes 96x96 & 144x144. These Wattmeters are ideal for clear precise analog indication of power in applications such as power generation, industrial control panels & power distribution.



## FREQUENCY METERS

SF-72, SF-96



Pointer type Frequency meters with a clear well defined scale marking. Vibrating reed type Frequency meters indicate frequency by vibrating reed.



## MDI METERS

MDI-72, MDI-96(3)



Available in 2-pointer and 3-pointer configurations, MDI meters indicate the thermal / time characteristics of load. They help audit efficient use of transformer stations and distribution feeds.

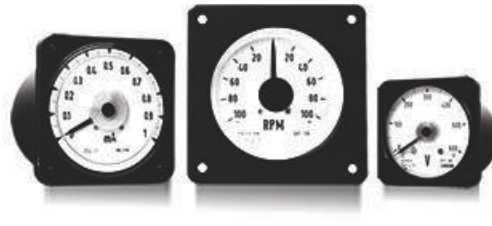


## LONG SCALE SWITCHBOARD PANEL METERS

DVF-72, DVF-96, DVF-144



DVF-80, DVF-110, DVF-130

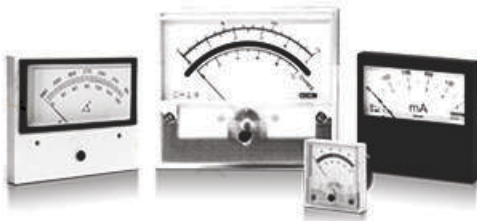


These meters feature extra wide scale, big bold numerals & divisions for unobstructed readings. Designed specially for stringent industrial, marine & power station applications.



## WINDOW MOUNT METERS

DRM-65, DRM-106, DRM-83, DRM-120



Specially designed for behind the panel mounting. This design improves panel outlook & also makes the instrument dust proof.



## PANEL BOARD METERS

MR-106 MO-65 EW-100



Traditional panel meters with upright scales & clear glass fronts with Round & Rectangular shapes. Edgewise meters provide maximum performance in the smallest of space for vertical & horizontal mounting.



## EDUCATIONAL METERS

EDM-1, EDM-2, EDM-3



Beemet Laboratory Desktop instruments are specially designed for easy use in educational institutes laboratory. These meters are offered with anti-parallax mirror for clear & precise reading.



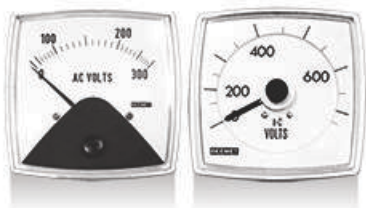
## PORTABLE AMMETER



Portable Ammeters, Voltmeters, Wattmeters, and Frequency Meters are designed for precision measurements in laboratories and test rooms with controlled environments. They feature mirror scales and are available in single, dual, triple, and quadruple ranges.

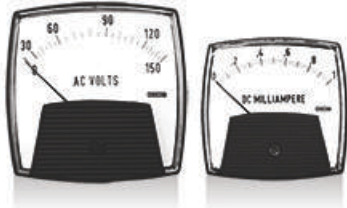
## FX SERIES

FX-80, FVF-80



## SX SERIES

SX-65, SX-80



Designed for dust, shock and weather proofing, the rugged design of SX and FX series meters suits a wide variety of demanding environmental applications. Featuring a wide view contoured window in 2 1/2" and 3 1/2", these meters provide accurate measurement of most electrical and electronic parameters.

## METER RELAY

DCF-80RL, DCF-120RL



This meter relay controls AC/DC voltage and current, with limit settings and an ON/OFF switch, cutting power and signaling warnings to prevent machine damage.

## DIGITAL METERS

BD-96, BD-96P, BD3-96, MOUDLE



Digital panel meters available in 96x48 and 96x96 sizes. Single phase as well as 3-phase models with 4 digit ultra bright LED display. These meters are micro-controller based design with site programmable PT ratio and True RMS measurement. 3 1/2 digit modules.

## MULTIFUNCTIONAL METERS

VAF-96, PA-96



Multifunction meters have wide applications to measure all electrical parameters such as A,V,HZ,KW,PF, KVA,KVAR,KWh for single & three phase use with onsite programmable CT & PT ratio.

## HOUR METER



Provides operating time in hours and tenths with turning indicators. Robust design with dust and moisture protection, available with 7 bezel options.

## IMPULSE COUNTERS

BEE12C, BEE24C

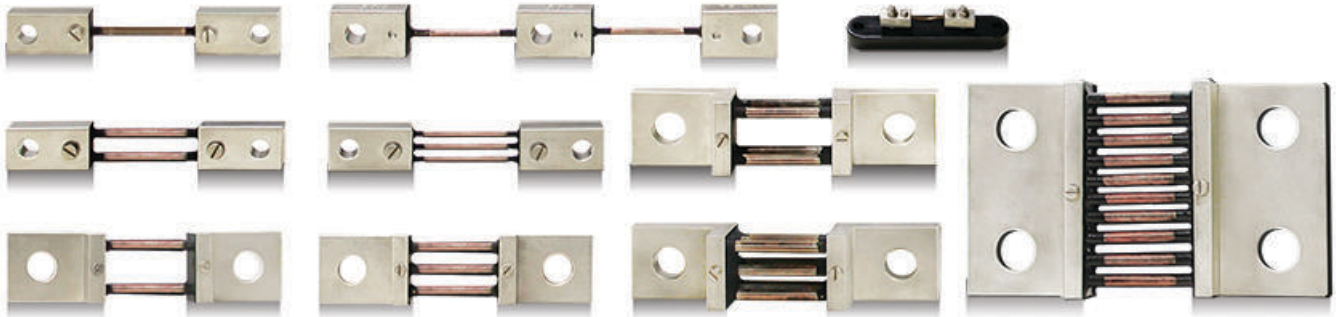


4/6/7-digit electromechanical impulse counters used in automated systems and for tracking counts. Available in different bezel configurations such as round, rectangular, square, screw-mount and push-mount.



## SHUNTS

ROD TYPE & PLATE TYPE



Available in a wide range from 1A - 25,000A, our Ammeter Shunts are manufactured with high quality Manganin wire, which is the best alloy for shunts application with temperature coefficient of only 10ppm. This provides a high level of stability. Our shunts are available in rod and fin configurations. Bakelite base is available for certain models.



## CURRENT TRANSFORMERS

BEE-301, BEE-401, BEE-601, BEE-801, BEE-1001, BEE-3301, BESC-120



Available in various ranges, our current transformers are made of ABS plastic moulding with apertures accepting a wide range of bus bar. These CTs are ultrasonically welded and unbreakable.

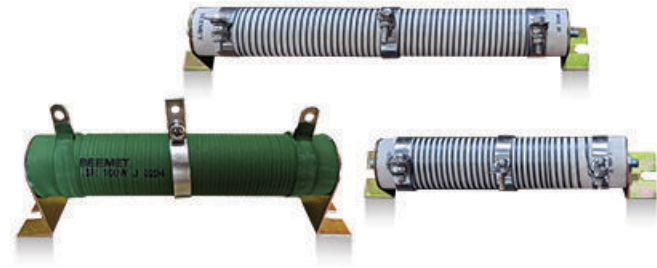


## CORE BALANCE CURRENT TRANSFORMERS



Made from encapsulated ABS moulding, all ratios available to match commonly available ELRs. CBCTs for EFRs also available in tape-wound configuration in various rectangular and circular sizes.

## RESISTORS



These wire-wound resistors are manufactured with the highest grade Nickel Chrome and Copper Nickel alloy wires to provide mechanically uniform tension and spacing.

## RELAYS

ELR-96, EFR-96



Earth Leakage Relay (ELR) and Earth Fault Relay (EFR) for maintaining electrical safety. Available in panel mount and DIN-rail mount configurations. They come with user-settable trip level and timer delay.

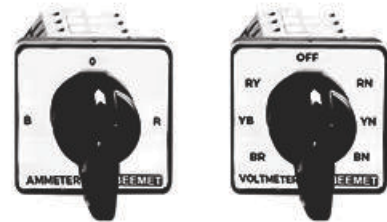
## TRANSDUCERS



They precisely measure and convert AC/DC voltage and current signals into proportional DC outputs. With high accuracy, galvanic isolation, SCADA support, telemetry, and industrial use cases. Customizable inputs/outputs and universal auxiliary power ensure reliable operation in demanding environments.

## SELECTOR SWITCHES


RCS 163, RCS 164, RCS 166, RCS 167, RCS 164A



Our Voltmeter and Ammeter Selector Switches are manufactured with high grade engineering material, confirming to international standards. They provide various switching options such as 1 pole - transformer, 3 phase line-to-line, line-to-neutral, etc.

# BEEMET INSTRUMENTS PVT.LTD.

EL-102, Electronic Zone, MIDC, Mahape, Navi Mumbai 400710, India

Tel: +91 22 2672 0045, +91 98331 08556  +91 98670 88556

Web: [www.beemet.com](http://www.beemet.com) | Email: [info@beemet.com](mailto:info@beemet.com) | [ops@beemet.com](mailto:ops@beemet.com)