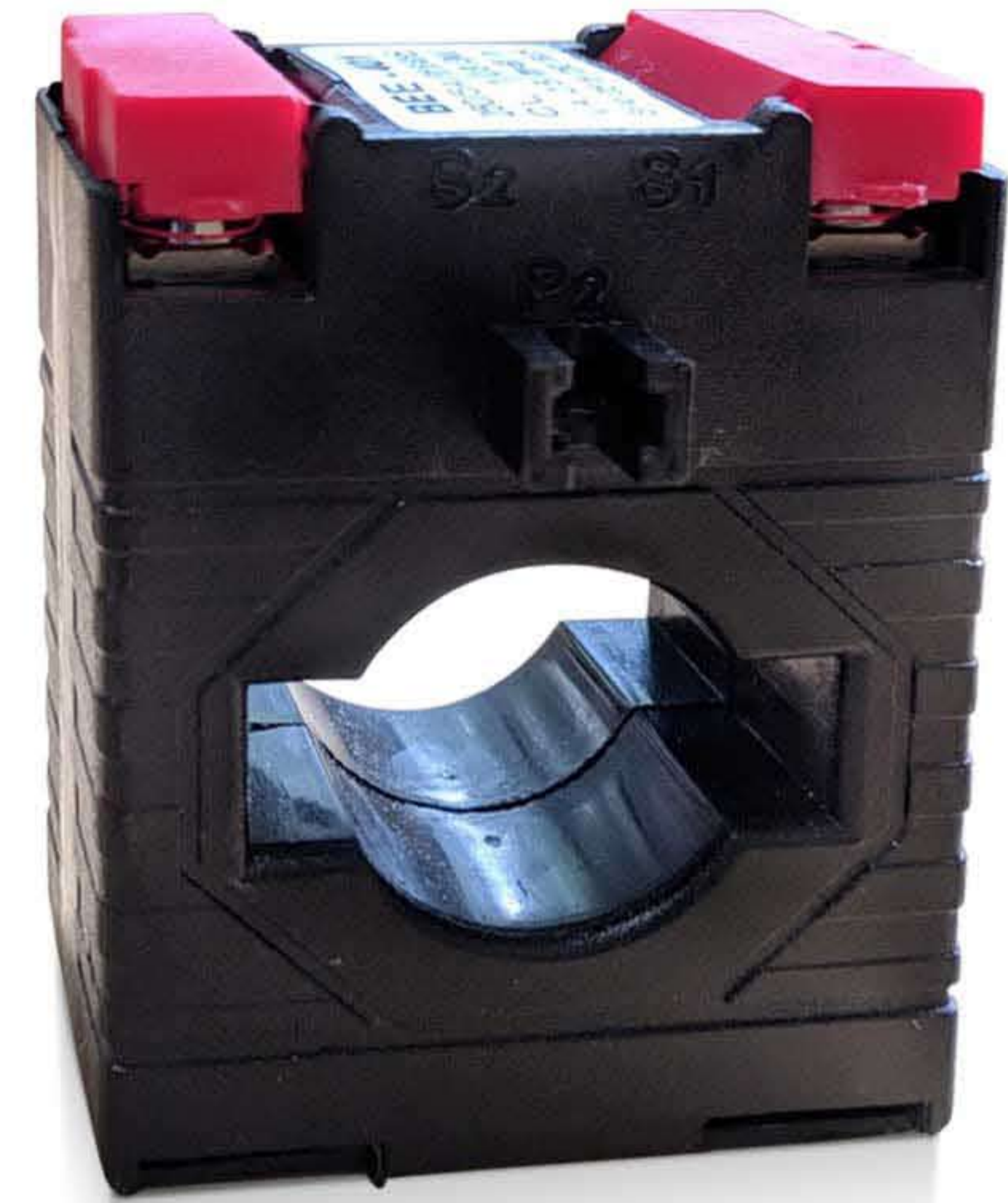


BEE 401 CURRENT TRANSFORMER

Beemet current transformers are made of ABS plastic moulding with apertures accepting a wide range of bus bar. These CTs are ultrasonically welded and unbreakable.

GENERAL SPECIFICATIONS

Accuracy Class	0.5, 1 and 3
Primary Current	30A - 800A
Secondary Current	5A
Frequency	50/60Hz
Rated Load	2.5VA, 5VA, 7.5VA
Rated Current	2.55 x Ith
Thermal nominal continuous	1.2 times rated current continuously



SALIENT FEATURES

- Compact size with ease of mounting.
- High accuracy and reliability.
- Highly cost effective.

SELECTION CHART

Ratio		1 VA	2.5 VA	5 VA
150/5A	Class	3	-	-
200/5A	Class	1	-	-
250/5A	Class	1	-	-
300/5A	Class	1	3	-
400/5A	Class	-	1	3
500/5A	Class	-	0.5	1
600/5A	Class	-	0.5	1
750/5A	Class	-	0.5	1
800/5A	Class	-	0.5	1

DIMENSIONS

